



INSTRUCTION BULLETIN

No. 9008457
Machine: T16
Published: 01-2017
Rev. 01

NOTE: DO NOT DISCARD the Parts List from the Instruction Bulletin. Place the Parts List in the appropriate place in the machine manual for future reference. Retaining the Parts List will make it easier to reorder individual parts and will save the cost of ordering an entire kit.

NOTE: Numbers in parenthesis () are reference numbers for parts listed in Bill of Materials.

Installation instructions for **kit number 9008037**

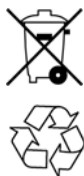
SYNOPSIS:

This kit contains the parts needed to replace the single fan assembly with a dual fan assembly on T16 scrubbers.

Please follow step-by-step instructions.

SPECIAL TOOLS / CONSIDERATIONS: NONE

(Estimated time to complete: 45 minutes)



PROTECT THE ENVIRONMENT

Please dispose of packaging materials, old machine components, and hazardous fluids in an environmentally safe manner according to local waste disposal regulations.

Always remember to recycle.

PREPARATION:

1. Park the machine on a clean level surface, turn off the machine, and remove the key.

FOR SAFETY: Before leaving or servicing machine, stop on level surface, turn off machine, and remove key.

2. Disconnect the battery cables from the batteries.



WARNING: Always disconnect battery cables from machine before working on electrical components.

3. Disconnect the vacuum hose from the rear squeegee assembly and remove the rear squeegee assembly from the machine. Set the rear squeegee assembly aside. (Fig. 1)

NOTE: Refer to MAINTENANCE section in OPERATORS MANUAL for instructions how to remove rear squeegee assembly from machine.

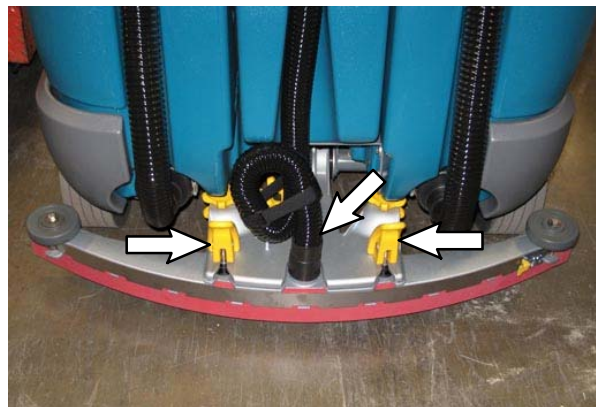


FIG. 1

INSTALLATION:

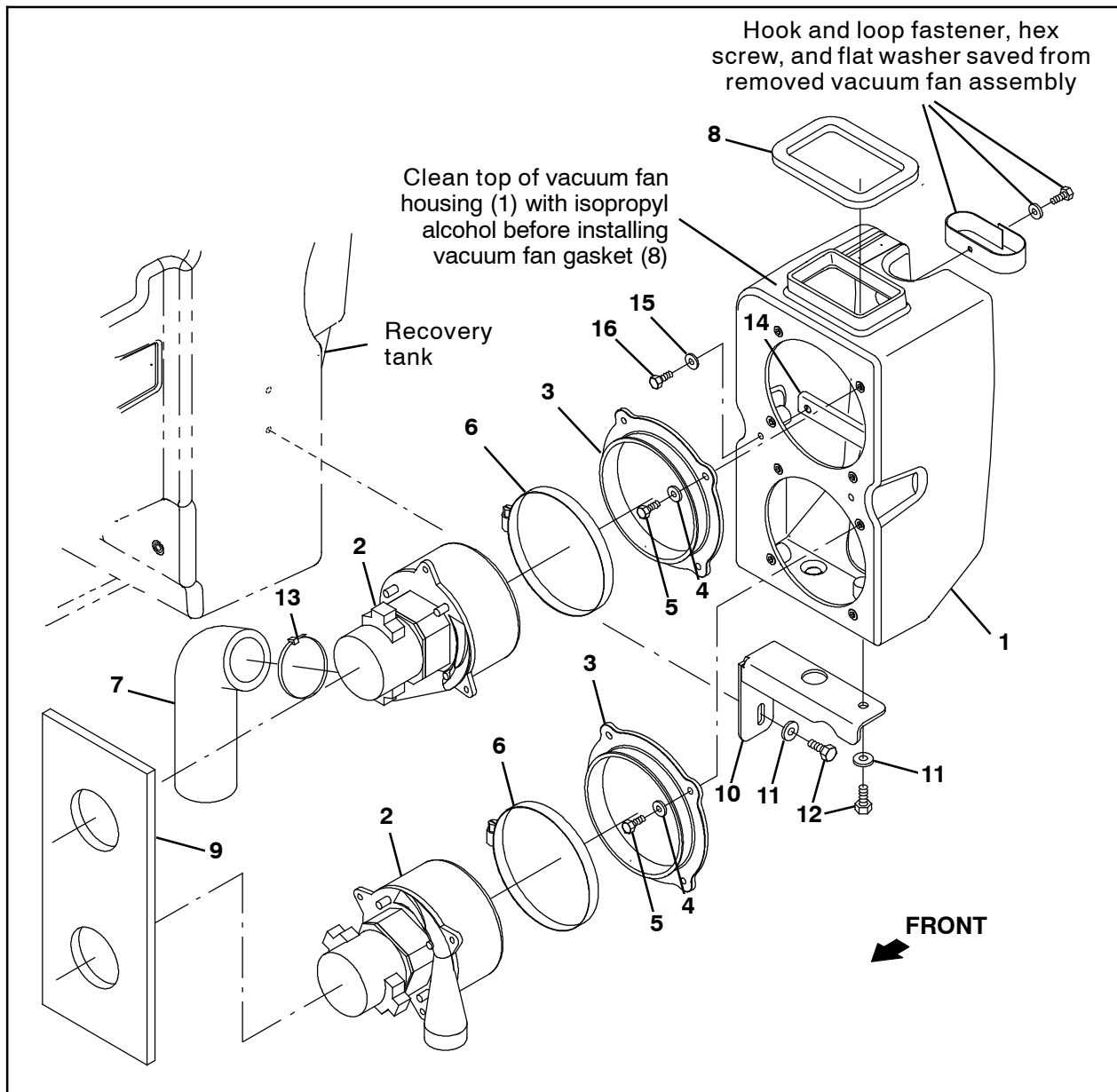


FIG. 2

1. Remove the hardware securing the vacuum fan assembly to the machine and carefully remove the vacuum fan assembly from the machine. (Fig. 2)
2. Disconnect the main wire harness connection(s) from the vacuum fan assembly. (Fig. 2)
3. **Machines without optional vacuum wand only:** Remove the hook and loop fastener from the removed vacuum fan. Set the hook and loop fastener, hex screw, and flat washer aside. Discard the removed vacuum fan assembly. (Fig. 2)
4. Use two M6 hex screws (16) and two sealing washers (15) to install the stiffener bracket (14) onto the vacuum fan housing (1). (Fig. 2)
5. Apply a light bead of RTV silicone adhesive sealant onto both vacuum fan mounting seals (3). (Fig. 2)
6. Use four hex screws (5) and four flat washers (4) to install each vacuum fan mounting seal (3) onto the vacuum fan housing (1). (Fig. 2)
7. Use a hose clamp (6) to install each vacuum fan (2) onto the vacuum fan mounting seals (3) / vacuum fan housing (1). (Fig. 2)

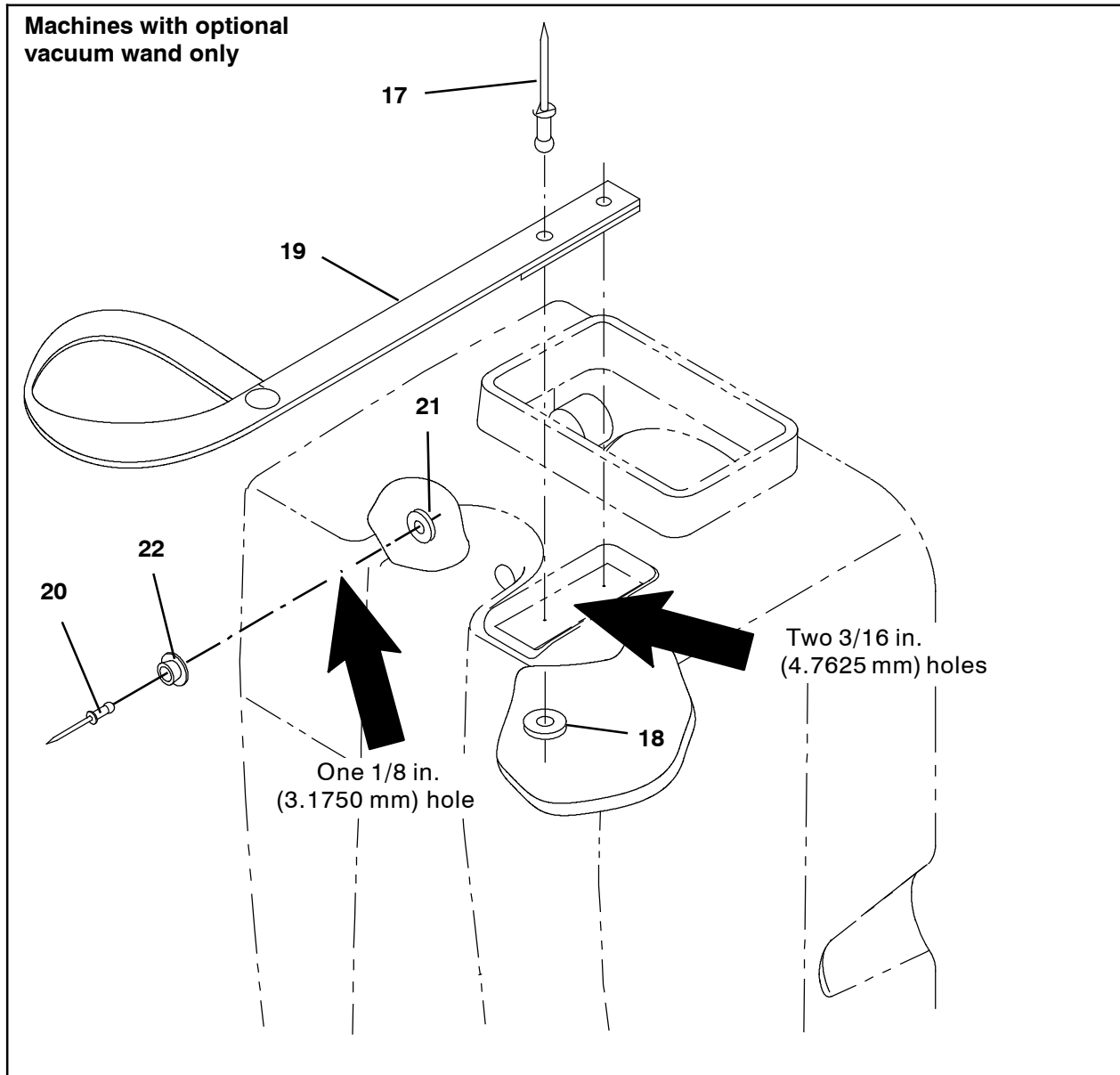


FIG. 3

8. Use a cable tie (13) to install the vacuum fan muffler (7) onto the top vacuum fan (2). (Fig. 2)
9. **Machines without optional vacuum wand only:** Install the saved hook and loop fastener onto the vacuum fan housing (1). (Fig. 2)
10. **Machines with optional vacuum wand only:** Drill two 3/16 in. (4.7625 mm) holes and one 1/8 in. (3.1750 mm) hole into the vacuum fan housing (1). Look for drill points (indentations) in the vacuum fan housing for exact locations where holes should be drilled. (Fig. 3)
11. **Machines with optional vacuum wand only:** Use a rivet (20) and flat washer (21) to install the push snap catch (22) onto the vacuum fan housing (1). (Fig. 3)
12. **Machines with optional vacuum wand only:** Use two rivets (17) and two washers (18) to install the handle retainer strap (19) onto the vacuum fan housing (1). (Fig. 3)
13. Use isopropyl alcohol to clean the area on top of the vacuum fan housing (1) where the vacuum fan gasket (8) will be installed. (Fig. 2)
14. Install the vacuum fan gasket (8) onto the vacuum fan housing (1). (Fig. 2)

15. Use one M8 hex screw (12) and one flat washer (11) to install the fan bracket (10) onto the vacuum fan housing (1). (Fig. 2)
16. Connect the main wire harness to the vacuum fans (2). (Fig. 4)
17. Install the acoustic insulation (9) onto the vacuum fan assembly. (Fig. 2)
18. Use two M8 hex screws (12) and two flat washers (11) to install the vacuum fan assembly onto the recovery tank. (Fig. 2)
19. Reinstall the rear squeegee assembly onto the machine.
20. Reconnect the battery cable to the machine.
21. Start and test the machine. Operate the machine in the scrub mode. Ensure the machine removes water from the floor while in the scrub mode.

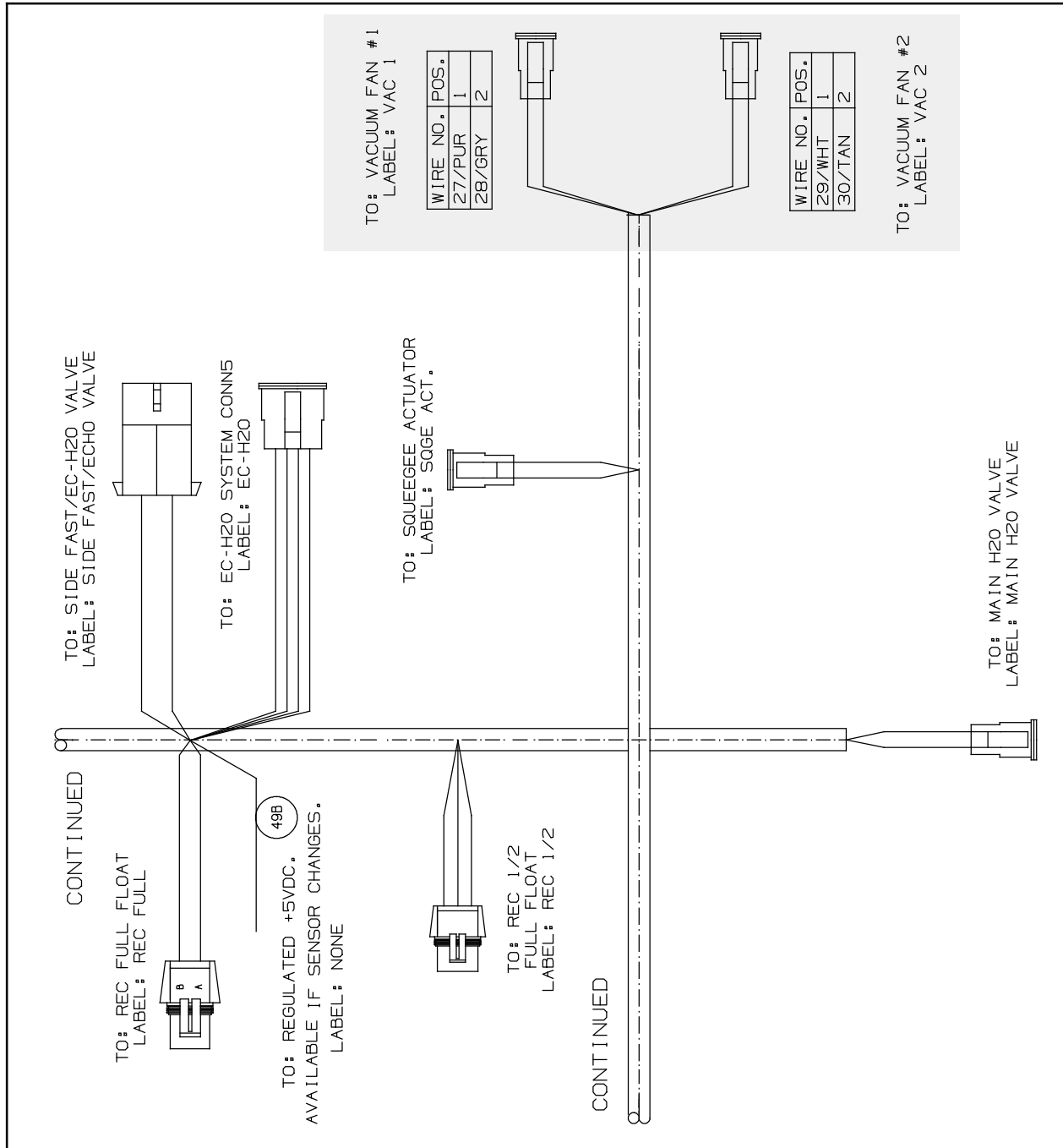


FIG. 4

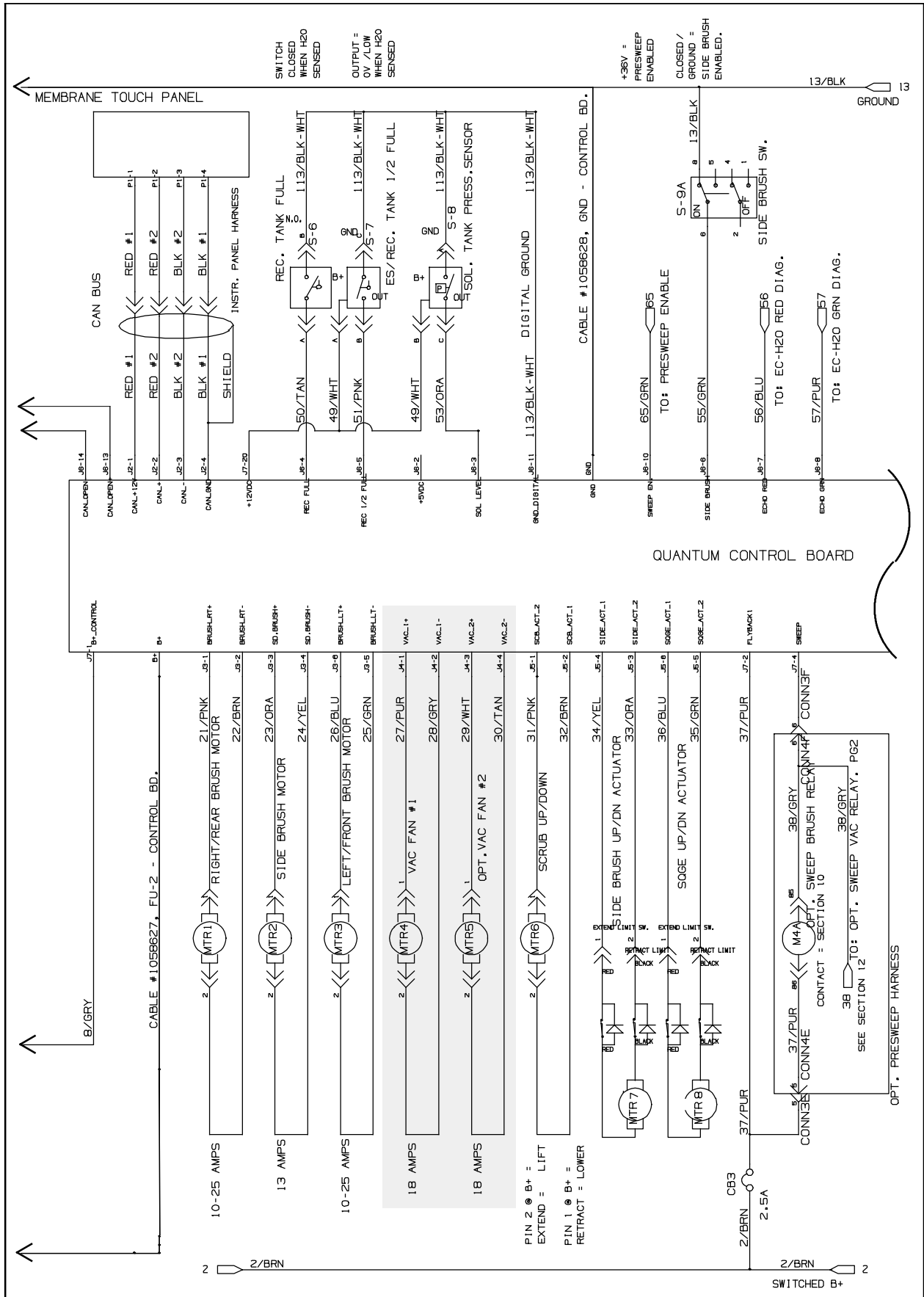


FIG. 5

Bill Of Materials For Vacfan Kit, Dual, CI [T16] - 9008037

Ref.	Part No.	Description	Qty.
▽	9008037	Vacfan Kit, Dual, CI [T16]	1
▲	1 1060142	Housing, Vacfan, Dual, Rm- Cptl, Trm [T16]	1
▲▽	2 1056623	Fan, Vacuum, 5.7d, 036vdc, 3 Stage	2
▲▲	1041772	Brush Kit, Motor	1
▲▲	1041766	Cover, Cooling Fan	1
▲	3 1059661	Seal, Mtg, Vacfan	2
▲	4 29570	Washer, Flat, 0.28b 1.00d .06, Stl	8
▲	5 15678	Screw, Hex, M6 X 1.00 X 16, SS	8
▲	6 49891	Clamp, Hose, Wormdrive, 5.56- 6.50d, .56w	2
▲	7 1054231	Muffler, Vacfan	1
▲	8 1052520	Gasket, Vacfan	1
▲	9 1053268	Insulation, Acstc, 0.5, 06.6 X 15.8 C- 0	1
▲	10 1054711	Bracket, Mtg, Hsng, Fan	1
▲	11 1017218	Washer, Flat, 0.32b 1.00d .12, SS	3
▲	12 09740	Screw, Hex, M8 X 1.25 X 20, SS	3
▲	13 49263	Tie, Cable, Nyl, 11.4l, .19w, 3.0 Max. D	1
▲	14 1066906	Bracket, Stiffener, Hsg	1
▲	15 76426	Washer, Sealing, 0.28b 0.75d SS, Neo	2
▲	16 08716	Screw, Hex, M6 X 1.00 X 20, SS	4
▲	17 68567	Rivet, Blind, .187d X 0.53 X .62d, Alm	2
▲	18 86308	Washer, Flat, .19b .50d .06, Alm, Blind	2
▲	19 1061811	Strap, Retainer, Handle	1
▲	20 01335	Rivet, Blind, .125d X 0.44 X .25d, Alm	1
▲	21 02892	Washer, Flat, 0.12b 0.38d .03, Stl, PI	1
▲	22 1061812	Catch, Snap, Push, Mal	1
▲	23 67767	Clamp, Cable, Stl, 0.69d X 0.62w, 1hole	1
▲	24 1020341	Screw, Hex, M6 X 1.25 X 20, SS, SEMS	1
▲	25 44961	Tie, Cable, Nyl, 14.5l .30w 4.0 Max D	1

TENNANT COMPANY
P. O. Box 1452
Minneapolis, MN 55440-1452